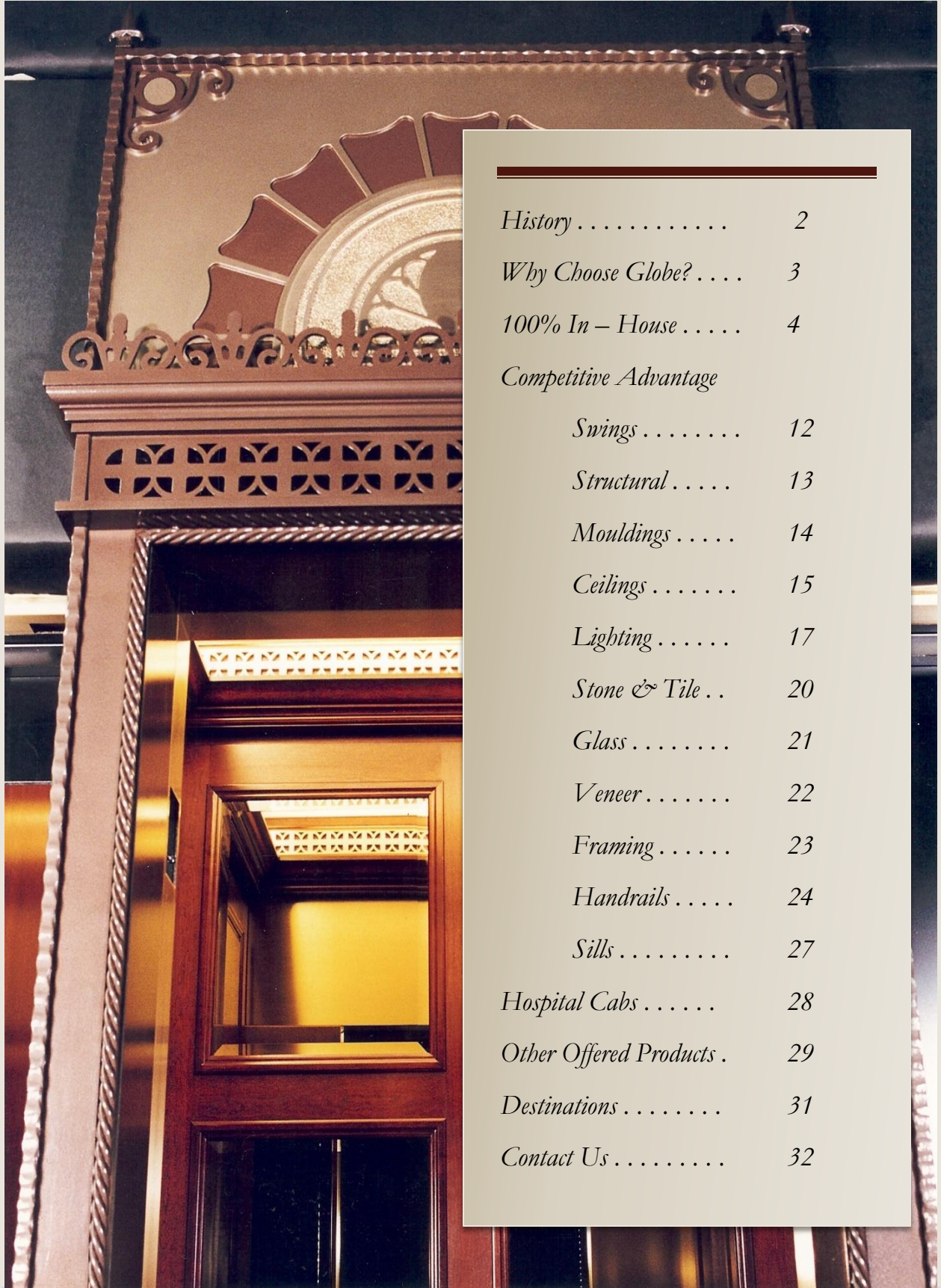




**CONSTRUCTING NEW STANDARDS**





<i>History . . . . .</i>	<i>2</i>
<i>Why Choose Globe? . . . .</i>	<i>3</i>
<i>100% In – House . . . . .</i>	<i>4</i>
<i>Competitive Advantage</i>	
<i>Swings . . . . .</i>	<i>12</i>
<i>Structural . . . . .</i>	<i>13</i>
<i>Mouldings . . . . .</i>	<i>14</i>
<i>Ceilings . . . . .</i>	<i>15</i>
<i>Lighting . . . . .</i>	<i>17</i>
<i>Stone &amp; Tile . . . . .</i>	<i>20</i>
<i>Glass . . . . .</i>	<i>21</i>
<i>Veneer . . . . .</i>	<i>22</i>
<i>Framing . . . . .</i>	<i>23</i>
<i>Handrails . . . . .</i>	<i>24</i>
<i>Sills . . . . .</i>	<i>27</i>
<i>Hospital Cabs . . . . .</i>	<i>28</i>
<i>Other Offered Products . . . . .</i>	<i>29</i>
<i>Destinations . . . . .</i>	<i>31</i>
<i>Contact Us . . . . .</i>	<i>32</i>



**HISTORY**

Globe Architectural & Metal's roots date back to the original Globe Van Doorn Co. founded in the early 20<sup>th</sup> century. For nearly 100 years, Globe Van Doorn provided the world with some of its most prestigious elevators.

In 1993, Globe Van Doorn ceased operations. At this time, Globe Architectural & Metal was born with key individuals from Globe Van Doorn joining the new company with the same goal – to continue providing the best elevators available on the market today.

Mirror Finished  
Chrome for

*Elegance*



NORTH CAROLINA NATIONAL BANK LOBBY  
Plaza Tower, Charlotte, N. C.

Nothing tests the skill of the elevator car craftsman as does this beautiful mirror-like hard wearing finish. Built by Globe-Van Doorn craftsmen this unique elevator car represents the care and ability that has produced America's finest for nearly a century.

*When You Think Elevator Cars You Can't Do Better Than Think...*

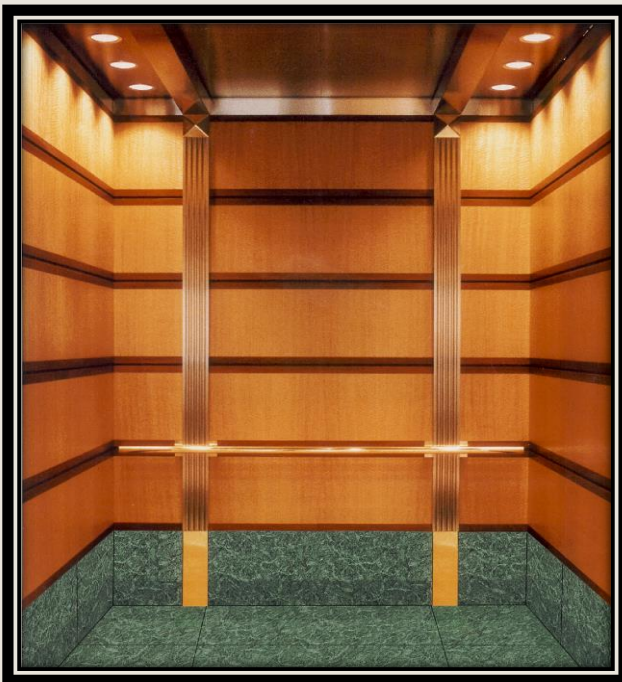
**GLOBE-  
VAN DOORN**

MILWAUKEE,  
WISCONSIN 53209

## WHY CHOOSE GLOBE?



*MB Bank*



*Franklin Court*

### OUR MISSION

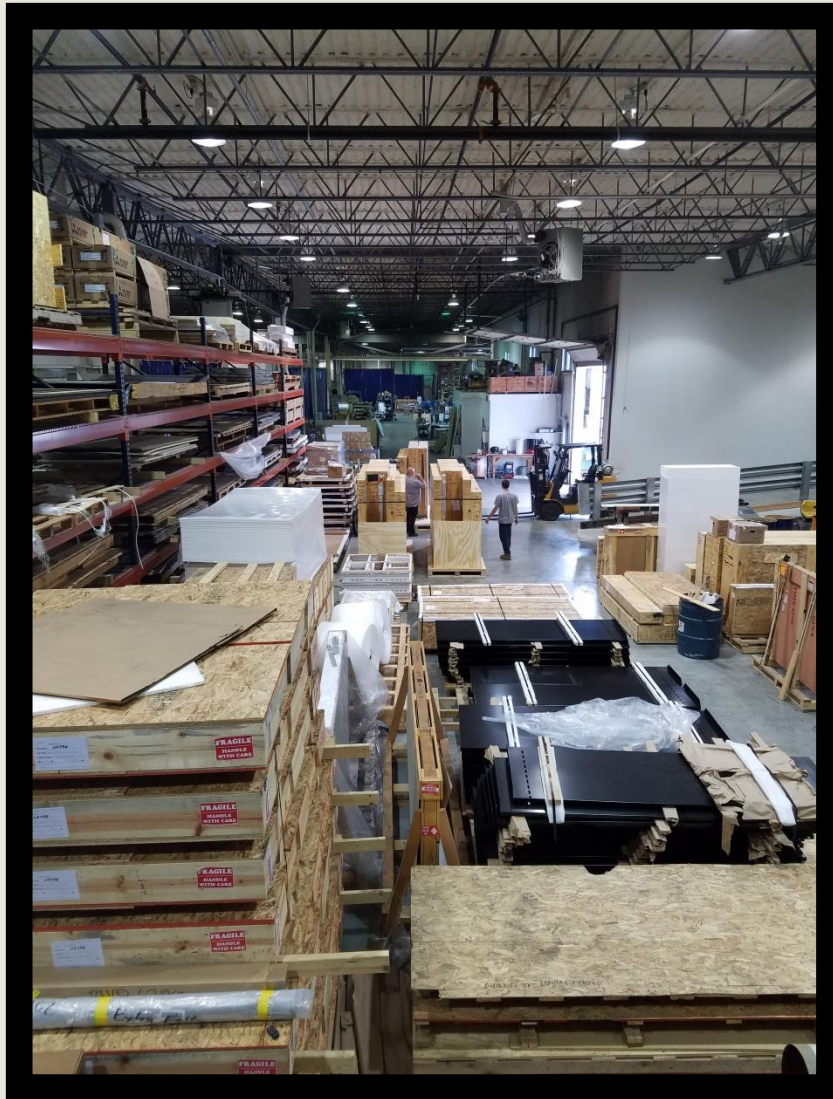
“To offer the customer a long-lasting, prestigious product while maintaining the highest quality reputation at a competitive price”

For over 24 years, Globe has stood by its mission to remain one of the top contenders in the country at providing custom elevator cabs to its customers. It is not only important to us that the customer receives the desired custom product, but as well as the highest-quality fabrication and materials the market has to offer. We are proud of our repeat-consumer business that Globe has held for the past 24 years. This is what makes our company what it is today.



## 100 % IN-HOUSE MANUFACTURING

Globe has remained proud of our capability to sustain a 100% in-house manufacturing and vertical integration to remain in constant control with the product as well as dramatically lowering lead times. With an over 45,000 square foot facility, and a 20+ employee company depth, we are able to mass produce custom elevator cabs all over the country.



*Design Engineering: Transforming Your Ideas into Reality*



626 Jackson  
Chicago, IL



Women's  
Athletic Club  
Chicago, IL



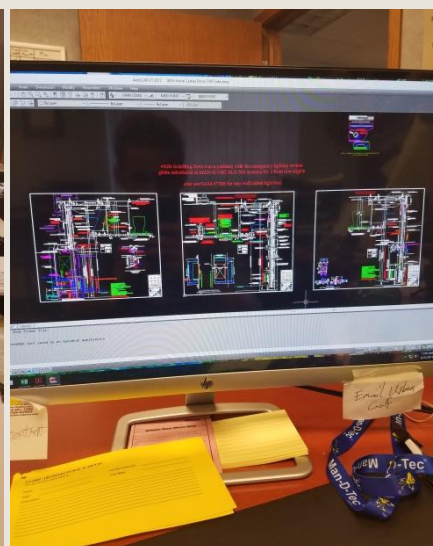
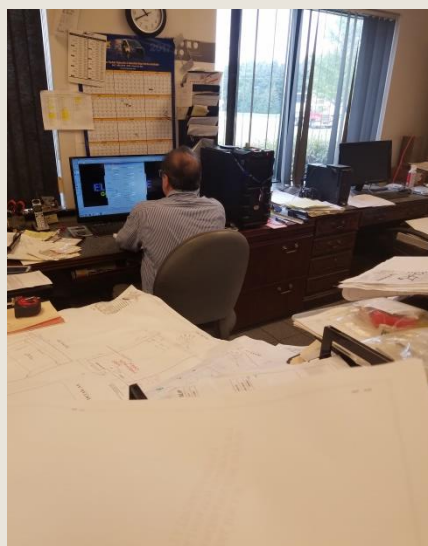
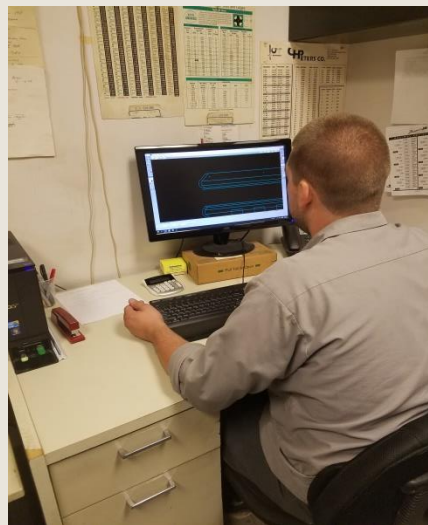
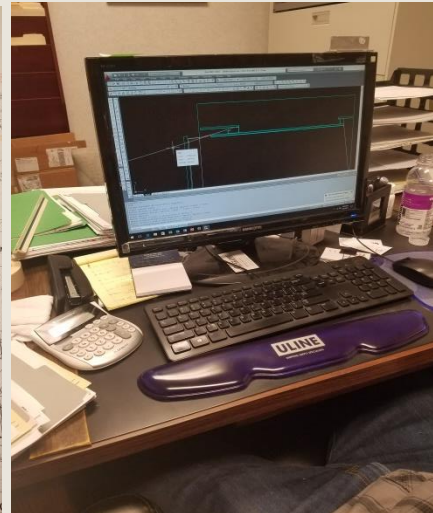
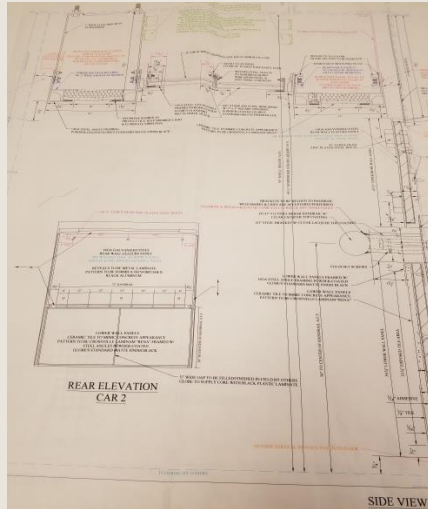
Drake Hotel  
Chicago, IL





Being a custom manufacture also means a considerable amount of time devoted to custom **engineering & layouts**. Every cab design is drawn out in intricate detail with extensive amount of engineering hours to ensure accuracy.

Each cab drawing is then broken out into individual layouts; meaning every bracket, clip, channel, bend, cut, and hole is individually programmed before making its way towards manufacturing. We strive on our ability to take on any challenge for custom fabrication in the business.



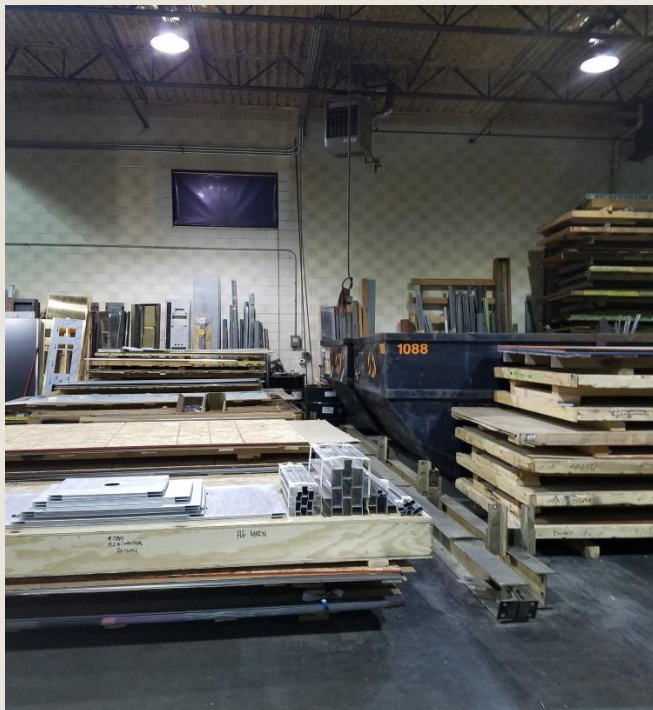


*Cold Rolled Steel*

*304 Stainless Steel*

*Muntz Bronze*

*Aluminum*



Our process begins with receiving high grade metal products with the majority consisting of aluminum, cold-rolled steel, 304 grade stainless steel, and muntz bronze.

Material is securely stored and transferred to our steel department to begin fabrication.

Each material sheet is hand-inspected to ensure quality control of products and to prevent any flawed material from advancing further into the fabrication process.







Programs and layouts done within the engineering offices are then incorporated into the shops equipment; prepping it for sheering, punching, bending and engraving.

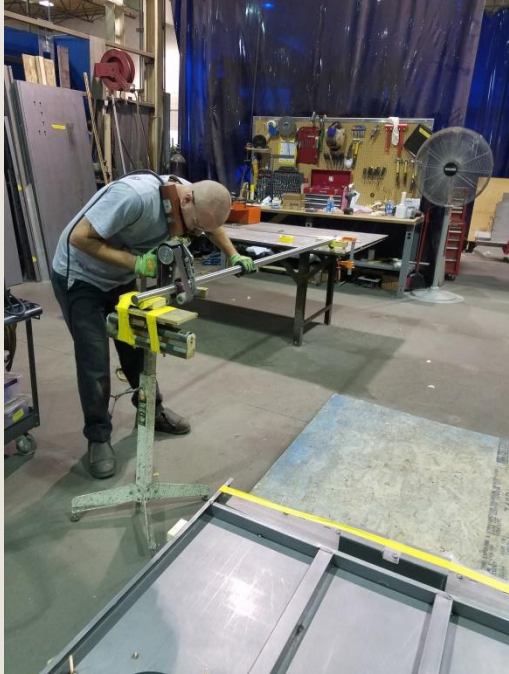
Our two Trumpf Trumatic 500 CNC punches accurately cut out selective pieces from the metal. Our commonly used metal products can be punched, bent, and sheared with stainless steel thickness' up to 1/4", widths up to 5' wide, and lengths up to 12' long.

Our machines layout to a precision punch within .005" and bent within .015".



Selected pieces for returns, hall plates, fire doors, destinations, etc. are engraved on one of our 5' x 10' or 5' x 5' industrial engravers.

Each engraving is individually programmed by our layout team to fit customer requirements.



## *Welding & Polishing*

Shell walls, top ceilings, handrails, and even some selected destinations are then securely welded with necessary reinforcements and other bracketing. Welds are polished down and prepared for powder coating. Fabricating quality cabs also means fabricating long-lasting cabs, which makes our welding department critical.

Bronze, copper, and stainless steel material is then polished and/or buffed to a clean and optimal finish, with selected pieces receiving a protective layer coat to avoid tarnishing.



Wall panels begin in the

*wood*

*department*

where 3/8" – 3/4" fire-rated dura-flake core or lightweight aluminum honeycomb is cut-to-size, edged, faced & backed, through-bolted for "Z" clips, then prepped for shipping.





## *Assembly*

Finished parts such as new and/or retro-fitted swings, ceilings, framed wall panels, aluminum shells, lighting solutions, and other cab components are then transferred over to our largest department of the facility - assembly. Employees averaging 10+ years' experience are used in this department to ensure their knowledge of the final product

Each cab, per cab zone, is then assembled fully in-house to ensure alignment and stability. All products are then prepped for shipment.



As a part of customary protocol from Globe Architectural & Metal, every new employee is required to learn the process of properly crating material for shipment. This process to us is as important as making the final product itself.

All crates are custom-made to fit product. Cross-country shipments include proper banding and fastening to a securely made skid for transport.





COMPETITIVE ADVANTAGE



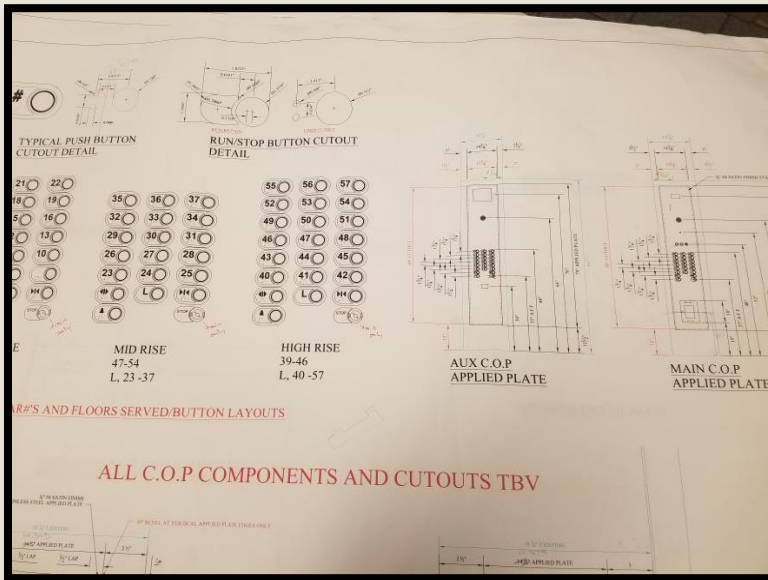
*Swing Returns* serve as one of Globe Architectural's strongest offerings. Our ability to retro-fit existing car operating panels, incorporate new car operating panels, and mount other fixtures including PI's, signage, and LECD monitors, into a clean, durable and well-manufactured complete new product gives us the competitive edge.



Our most common finishes include #4 304 stainless steel, #8 mirror stainless steel, and #4 muntz bronze.

#4 304 Satin Stainless Steel #4 60/40 Brushed Bronze #8 Mirror Finish Stainless Steel

Some of our more exclusive finishes include non-directional stainless steel, #6 hairline stainless steel, bead blast, #8 mirror bronze, oxidized bronze, 90/10 commercial bronze, and copper.



Our engineering team has perfected the design of the swing return to guarantee a clean and mechanically reliable product for your building.

Our *Aluminum Shell* wall keeps us ahead of the curve with cabs that are incredibly light weight but also maintain the same structure and durability as normal steel shells. These shells are made up of 1/8" high-grade aluminum, securely fastened reinforcements, and sound deadening exterior, all heavily powder coated to the color of the customers' choice. Our customer has the ability to drop anywhere from 300 to 550 lbs. with this innovative product.

Our heavy use of *Reinforcements* give our customers the security that our shells can handle any interior the market has to offer. Steel shell reinforcements are welded together for maximum strength while our aluminum reinforcements are securely fastened with thread lock for similar strength.

The *Aluminum Sub-wall* is commonly used in modernization projects. This product is easily fastened to any given shell, giving the proper mounting and alignment to a new desired interior.



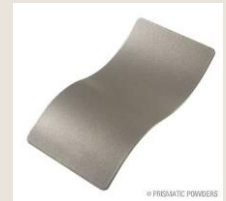
*Common Powder Coat Finishes*



*Satin White*



*Matte Black*



*Beige Metallic*



*Golden Rod*





Before

*The Drake Hotel*



After

For a less modern approach, our wood based cars and hand-made *wood mouldings* have given us a superior advantage in the market. With over 30 years' experience, our craftsmen hand-make every molding out of real hardwood; finished with high quality stain and a Class A fire-rated finish to meet all code requirements.



*229 Lake Shore Drive, IL*

DECORATIVE CEILINGS



*The Rookery, IL*



*Burnham Pointe, IL*

---

Turn your ceiling design into reality with 20+ years' experience from our specialty craftsmen, wood workers, and metal fabricators.

---



*The Waldorf Astoria, Beverley Hills, CA*



*Drake Hotel, IL*



## STANDARD CEILINGS

Please view our rendering brochure for a full list of our most commonly furnished ceilings

# Globe Architectural & Metal

W188 N11820 Maple Road, Germantown, WI 53022 - Phone (262) 250-1120 - Fax (262)250-1270

### Suspended Ceiling Option A

Six section Aluminum framed white translucent acrylic suspended ceiling. This ceiling has a standard frame width of 1 1/2" and is commonly back lit with florescent light fixtures.



### Suspended Ceiling Option B

#4 Satin finish stainless steel suspended ceiling with 3" low voltage LED downlighting. Flush mounted panel size, and panel quantity, is always dictated by overall suspended ceiling dimensions. Traditional Material Options-



### Suspended Ceiling Option C

Plastic Laminate suspended ceiling with applied hardwood mouldings and 3" low voltage LED downlighting. Applied wood mouldings are stained to match laminate color.

Material Shown:  
Wilsonart Plastic Laminate -  
#7039-78 Windsor Mahogany





## *Lighting*

GAM wants to be certain that the lighting of their elevator cabs meets all quality standards. GAM's suppliers are some of the best in the business when it comes to quality downlights, LED strip lighting, LED light panels, and fluorescent lighting.





Our standard LED *downlight* units are the most popular lights in today’s market. Ranging from 200 – 650 lumens per fixture, these long lasting lights (about 50,000 hour life) also come in many different sizes, wattages, shapes & finishes. All lights are equipped with an emergency lighting unit; providing power to two downlight units in power outage situations.



*Field Museum, IL*



Our LED *cove lighting* give our cabs an appealing wash-lighting look that can be incorporated into our ceilings, wall panels, and even handrails. Our abundance of strip lighting manufactures gives us a competitive edge in price & quality. These lights contain a dimmable, warm-white appearance while still remaining energy efficient.



*Parkshore Condos, IL*



A growing trend today, the *linear LED flush* lighting has proven to be a customer favorite. These LED's can provide full illumination of any cab regardless on small appearance. These lights have been used in ceiling perimeters, wall panel reveals, as well as incorporating into the front walls. These lights have the versatility of being placed flush, recessed, or protruding out.

With different dimmable options and lumens options, dozens of different lenses can be chosen to ensure the appearance is ideal.



*Eastgate Terrace, CA*



*Lake Point Towers, IL*



For a more classic look to elevator cabs, the elegant look of a *light trough* produces a similar look to the wash lighting but turns the attention to the cab ceiling. This look is magnified with frosted white lenses making the look not only prestige, but also makes for simple maintenance. GAM suppliers for LED's have given our light troughs the luxurious look it has over the past 23 years.



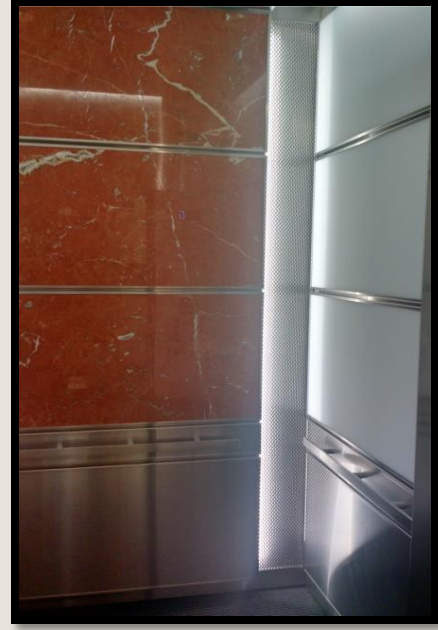


Our stone-based cabs stand for more than just durability, but luxury as well. Through different wholesalers, our stone is purchased directly from Italy; who still to this day supply the most luxurious stone in the world.

After shipment, stone is then gauged down to a more lightweight 1/4" – 1/2" thickness, then bonded to a light aluminum honeycomb substrate. This process makes for stone cabs feasible, while maintaining the original stone elegance.



*8055 Irvine, CA*



*633 St. Claire, IL*

## *Stone & Porcelain Tile*



*The Rookery, IL*



*Parkshore Condos, IL*

For a lighter, less expensive, and thinner substitute to stone while still maintaining the same elegant look, nothing compares to our suppliers collection of high quality Porcelain Tile.

Our suppliers are able to match dozens of popular stone, marbles, and granites on the market today while still maintaining a durable structure that real stone holds.



*Cuna Mutual, WI*



*Boardwalk, CA*



*One Parkway North, IL*



***Glass*** cabs have taken a massive jump in the today's market. Whether the application is to have your new cab fully enclosed with glass or create a decorative hang-on panel look, Globes fabrication process will ensure the safety of each piece of glass while keeping the high-quality finish to every piece.



*Properly framing our glass panels is important to ensure the safety of every glass panel. Framing glass not only meets ANSI Code, but also prevents glass from ever becoming dislodged while maintaining an attractive perimeter finish around each piece.*

*Picture: 200 S. Wacker, IL*





The elegant look of **Veneer** gives our elevator cabs a more classic and vibrant feel than the commonly requested plastic laminate panels. All of our veneer is handmade from a local supplier, followed by paneling & fire-rated coating. Veneer can be used in a combination for a more classic look while still maintaining a desired modern appeal.



*Pictures (Top Left to Bottom Right):*

*1 N. LaSalle*

*225 Wacker*

*330 N Wabash*

*360 N Michigan*

*Ballston Plaza*

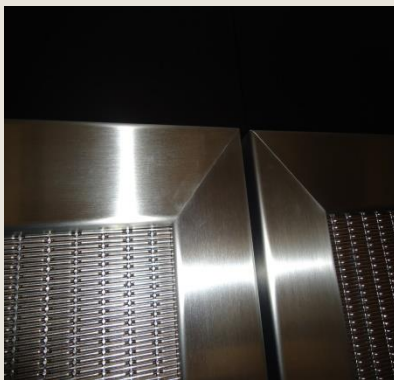
*Fairview Park*





*Northwestern University Hogan Hall*

Increase the appeal as well as the durability of your wall panels by adding **framing**. GAM can furnish all sorts of styles of framing with different metals and hardwoods. Properly framing panels is something GAM has been very critical about over the years; making sure every angle is securely fastened as well as mitered to perfection



*Thick Band Stainless Frame*



*Flush Stainless Frame*

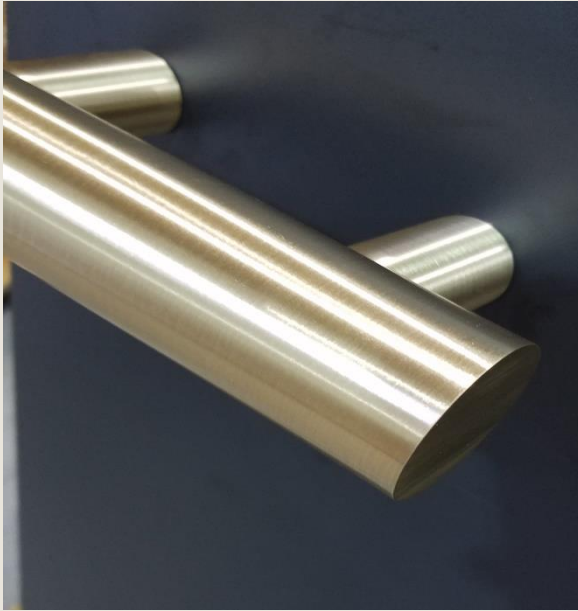


*Wrapped Bronze Frame*

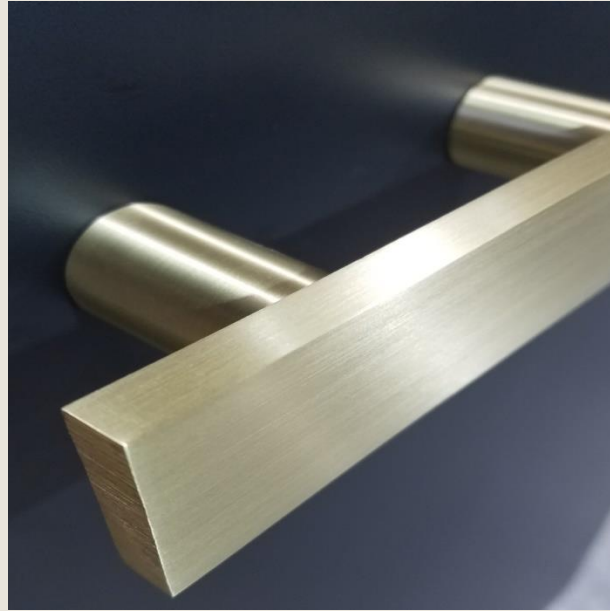


## *Handrails*

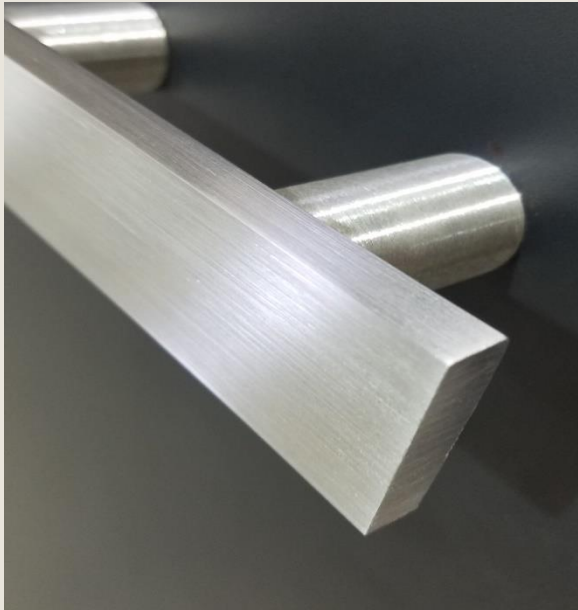
*1-1/2" Dia. Bronze Brushed Tube*



*3/8" x 1-1/2" Brushed Bronze Bar*



*Our most commonly used handrails are comprised of tubes & bars from 304 Stainless steel & Muntz Bronze. Each rail is hand & polished to a bright brushed finish with proper durable mounting brackets furnished for optimal strength. Bronze rails to receive clear coat protective lacquer.*

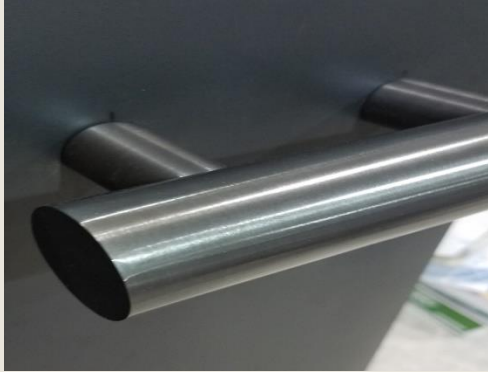


*3/8" x 1-1/2" Brushed Stainless Steel Bar*



*1-1/2" diameter Brushed Stainless Steel Tube*

## Specialty Handrails



Our **Oxidized Bronze** handrails are hand polished and then treated with oxidation chemicals giving the bronze a rich light brown color going as dark as black (picture). A protective lacquer coat is provided to all our oxidized material.

*Picture: Charter Hotel Seattle, WA*

Our **Hardwood Handrails** provide a very durable & yet clean look to both service & passenger cars alike.

Our hardwood is supplied locally and custom furnished if sizes exceed 1" thickness & 8" widths. All hardwood is finished with a clear coat fire-rated finish.

*Picture: Milwaukee Police Station, WI*



A **Continuous Handrail** has been a growing trend that serves as one of the strongest handrails today. Each rail (available in bar & tube) are each hand polished, followed by mitered and welded for absolute precision, finished with a light brushed polished to maintain a clean look.

*Picture: East Gate Terrace, CA*

**Mirror Polished Handrails** brighten up the cabs with a very unique look varying in stainless steel & bronze. Each rail, end cap, & bracket is buffed to perfection to bring out the true color in the metal. *Picture: San Diego Hilton Hotel, CA*







Possibilities are endless when it comes to **Custom Bracket** fabrication. We not only want our brackets to be the strongest on the market, but also the most appealing. With the help of our local supplier, specializing in all types of machining work, brackets are lathes, bored, and cut to perfection.

Picture: *1500 N Sheridan, Chicago IL*

With over a thousand choices in terms of color, **powder coated handrails** give the rails a durable & protective layer of paint with colors that will suit any customers choice.

Picture: *Blvd. 6200 Paseo, San Diego, CA*



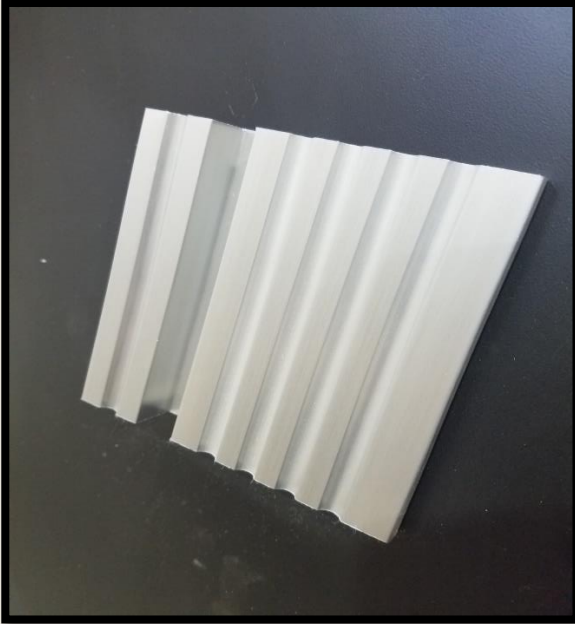
**Custom end caps** not only protect against injury, but also give a unique look to every cab. Our metal fabricators can work wonders when it comes to forming & furnishing these custom end caps.

Picture: *Belden Stratford, IL*

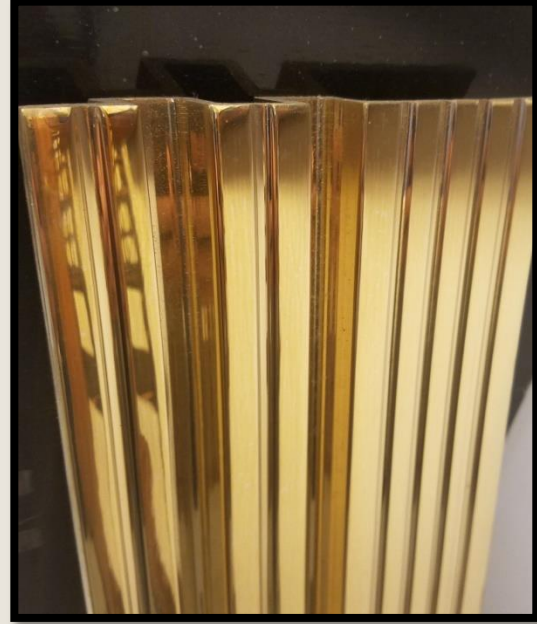


*Sills*

*Aluminum*



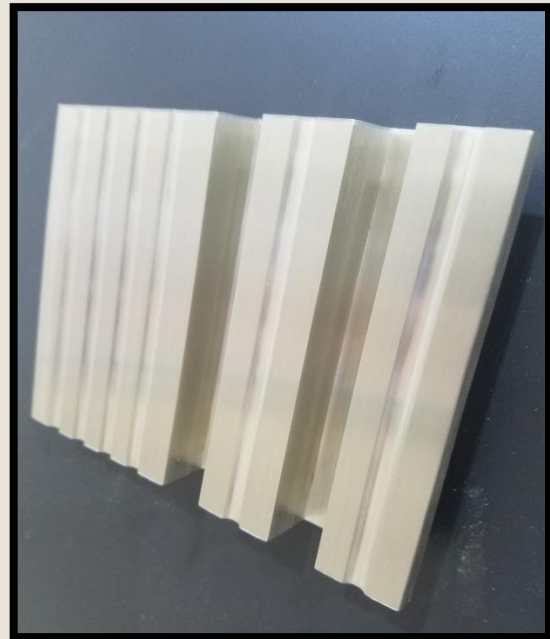
*Bronze Mirror*



Our hand polished extruded sills are available in one & two speed (3 speed + will be custom furnished) are available with matching extensions for all passenger & service car applications



*Bronze*



*Nickel-Silver*





● ● ●

GAM provides unique cabs for **hospital car** applications. Most cabs furnished includes a strong, solid base (Corian solid surface, stainless steel, bumper rails, etc.) for insurance of prevented damage from carts & gurneys while still obtaining an attractive design and look to brighten up the feel of the building.

● ● ●



*Froedtert Medical Center*

*OSF St. Anthony's*



*Rush Hospital*

*Other Capabilities*



*Our suppliers have the ability for providing the best **etching capabilities** you see today. Etching is not limited to only standard signage, but also custom to any customers request as well.*

*Our standard and custom **hall lanterns** bring a brilliant look to lobbies and each floor of buildings alike. Picture: **Tampa Bay Airport, FL***



*Our suppliers' **water jet & laser cutting** capabilities bring a three dimension vibe to logos, framing, wall panels, ceilings, and many other elevator applications. Laser cutting is available for many metals ranging from bronze, stainless steel, & aluminum. Picture: **Northwestern Mutual, Milwaukee, WI***



*To bring the classical feel back to historical buildings & locations, GAM provides renowned **grille work** that continues to prove that any design is possible with our metal craftsmen. Picture: **Wisconsin Historical Society, Madison, WI***







Our custom **Call Stations & PORTS** provide a modern look to lobbies and every floor alike. Call stations & ports include provisions for card readers as well as applied or separate etched & filled fire-logo to meet all code regulations. Picture: **Worldwide Plaza, NY**

### **Temporary Push-Button**

**Covers** are widely used when buildings are undergoing maintenance and still want to keep the genuine look of their cab & elevator halls as well as keeping necessary fire-code regulations. Available in standard designs as well as custom.

Picture: **1280 W. Peachtree, Atlanta GA**

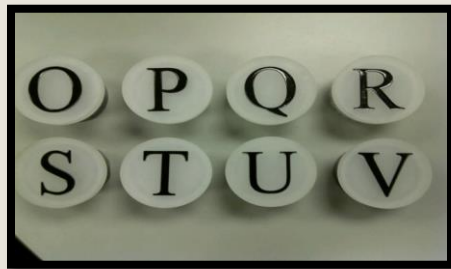
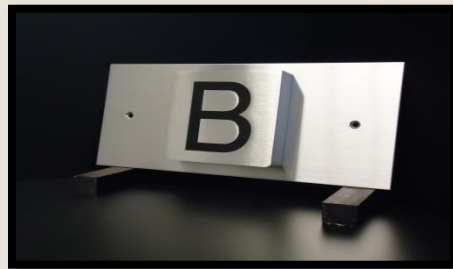


**Hoistway Door Clads** gives the ideal look to match any defined lobby appearance. Doors can either be a standard metal of choosing, or custom etched to a design of our customers' choosing. GAM receives existing hoistway doors which are stripped & re-cladded with their new door cladding. GAM also offers cladding to hoistway entrance frames to match the new doors. Entrance clads are to be done in the field by installation company.

Picture: **Wisconsin Historical Society, Madison WI**



**DESTINATIONS**





From all of us at Globe Architectural & Metal, we thank you for your time and look forward to helping you with your next elevator project.

Sincerely,

GAM

262-250-1120

Al Koenig – President

[Al.koenig@globe-architectural.com](mailto:Al.koenig@globe-architectural.com)

Jeanne Bard – Office Manager

[Jeanne.bard@globe-architectural.com](mailto:Jeanne.bard@globe-architectural.com)

Ted Trepte – Sales Engineer

[Ted.trepte@globe-architectural.com](mailto:Ted.trepte@globe-architectural.com)

Mike Koenig – Sales

[Michael.koenig@globe-architectural.com](mailto:Michael.koenig@globe-architectural.com)

Brad Palmer – Design & Development Project Manager

[Bradley.palmer@globe-architectural.com](mailto:Bradley.palmer@globe-architectural.com)



Metropolis Hotel Indigo, CA



Merchandise Mart, IL



San Diego Hilton, CA



Plaza East, WI



Takeda Pharmaceuticals, IL



Caesars Palace Forum, NV



*Federal Plaza, WI*



*680 N Lake Shore Dr. IL*



*200 S. Wacker, IL*



*Hotel Indigo, CA*



*Marriott O'Hare, IL*



*500 Corporate, IL*



*307 N Michigan, IL*



*Milwaukee Tool, WI*



*Overture Center, IL*