

# #01

Back-plates available in:



#4 Stainless (SS)

#4 Muntz (BRZ)

#8 Stainless (MS)



Powder Coat

Commercial Bronze

#8 Muntz

(PC)

(CB)

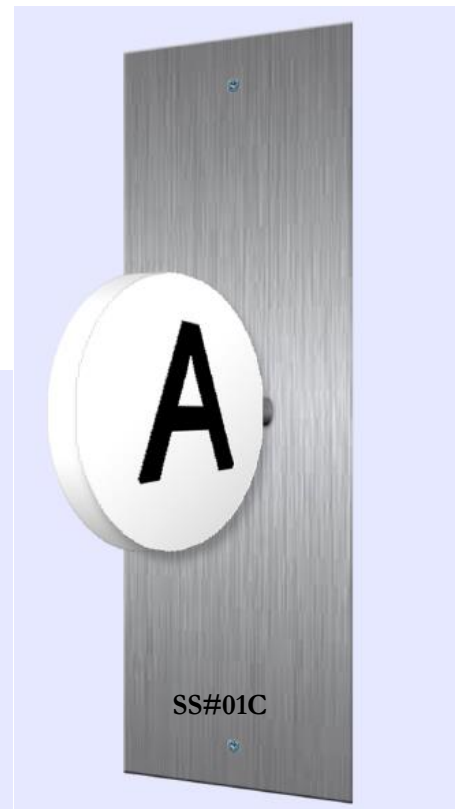
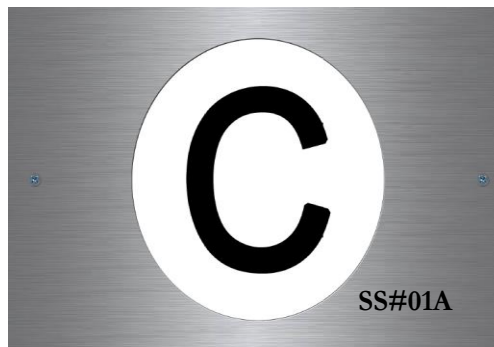
(MB)



#01

\*\*\*\*\*Please contact us for pricing.  
Price varies with freight, material,  
quantities, and other custom  
applications \*\*\*\*\*

- 14 gauge solid back plate with counter sunk holes for #8 fasteners
- 4" radius acrylic puck
- Double-side tape added to backside to ensure stability
- Some designs accommodate 24V LED accessible strip-light
- Applied black vinyl character or etched & filled character logo
- Acrylic pucks available in multiple thicknesses





# #11



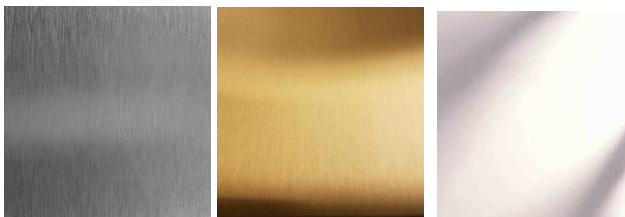
PC#11

- Extremely light weight 16 gauge solid back plate with double side tape for mounting
- Double-side taped and/or tapped applied character. Character available in multiple thicknesses and finishes in:
  - o Aluminum
  - o Steel
  - o Stainless Steel
  - o Bronze
  - o Acrylic
- #11 design destination standard size 5-1/4"(w) x 7" (h).
- #12 design destination standard size 4" (w) x 7" (h).

# #12

\*\*\*\*\*Please contact us for pricing. Price varies with freight, material, quantities, and other custom applications \*\*\*\*\*

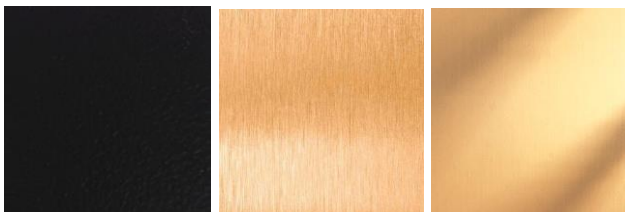
Back-plate available in:



#4 Stainless (SS)

#4 Muntz (BRZ)

#8 Stainless (MS)



Powder Coat

Commercial Bronze

#8 Muntz

(PC)

(CB)

(MB)

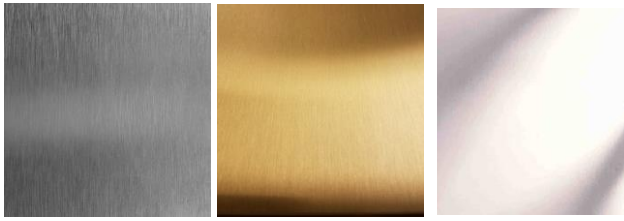


SS#12



# #21

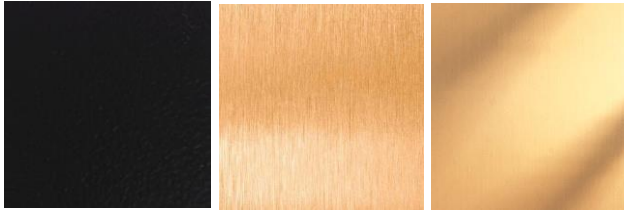
Available in:



#4 Stainless (SS)

#4 Muntz (BRZ)

#8 Stainless (MS)



Powder Coat  
(PC)

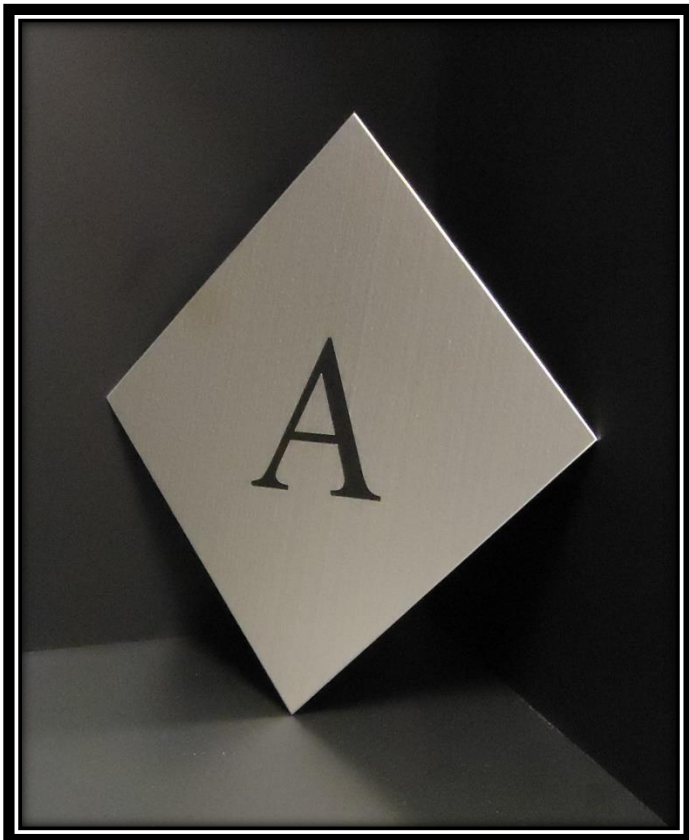
Commercial Bronze  
(CB)

#8 Muntz  
(MB)



SS#21

# #22



SS#22

\*\*\*\*\*Please contact us for pricing. Price varies with freight, material, quantities, and other custom applications \*\*\*\*\*

- 14 gauge solid back plate with option for counter sunk top & bottom holes for #8 screws
- Applied vinyl lettering or engraved & filled lettering
- Double-side tape added to backside to ensure stability
- #21 design destination standard size 6"(w) x 13" (h).
- #22 design destination standard size 8-1/4" square.

# #23

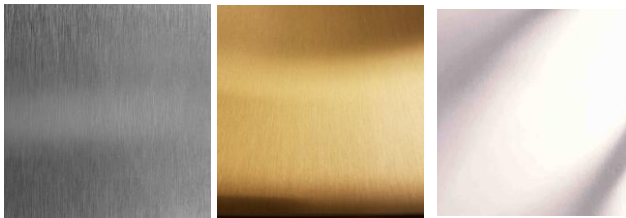


- 14 gauge solid vertical back plate counter sunk top & bottom holes for #8 screws
- Applied vinyl lettering to mounted acrylic
- Double-side tape added to backside to ensure stability
- 4-1/2"(w) x 10-3/4"(h) with 2-1/2" square cut-out
- Provisions for mounting 24V LED and speaker

\*\*\*\*\*Please contact us for pricing. Price varies with freight, material, quantities, and other custom applications \*\*\*\*\*

BRZ#23

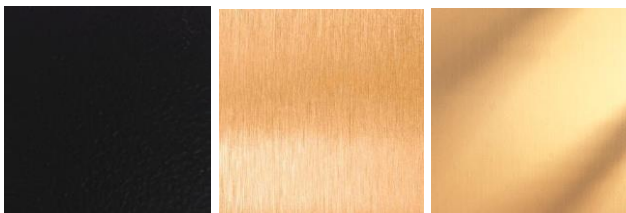
Available in:



#4 Stainless (SS)

#4 Muntz (BRZ)

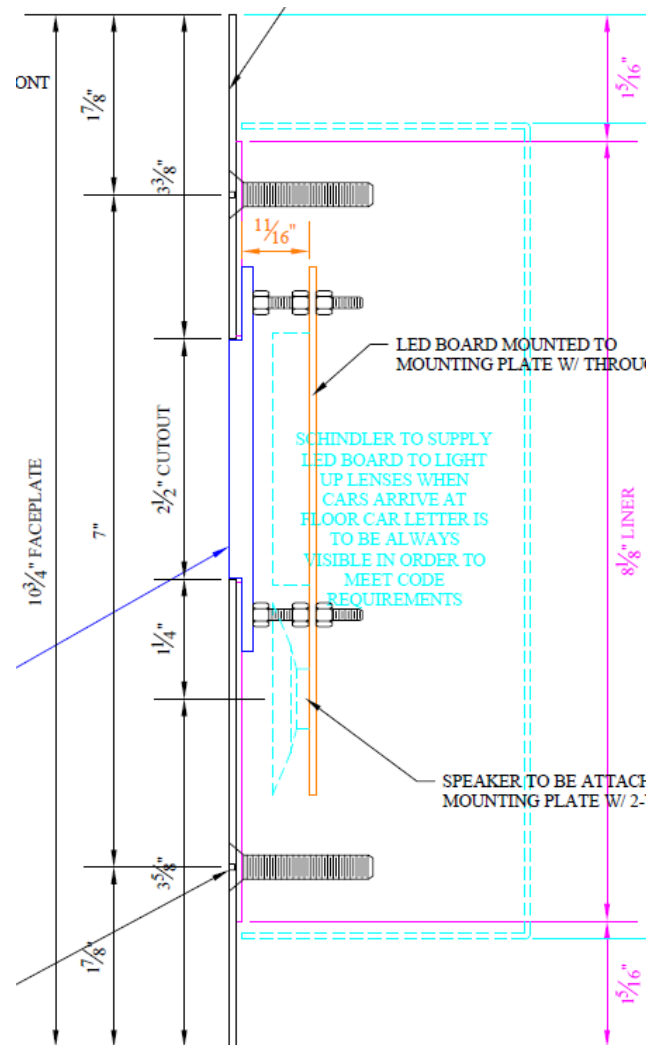
#8 Stainless (MS)



Powder Coat  
(PC)

Commercial Bronze  
(CB)

#8 Muntz  
(MB)



# #24

- 14 gauge solid custom cut back plate with provisions for fastening piece together with 1/4"(h) x 1/2" diameter beveled & polished plug stand-offs
- Applied vinyl lettering sandwiched between 1/4" opaque and 1/8" clear plastic fastened with studded metal buttons
- Top hole countersunk for #8 screw provisions with extruded anodized aluminum angle cover
- Custom cuts available for design

\*\*\*\*\*Please contact us for pricing. Price varies with freight, material, quantities, and other custom applications \*\*\*\*\*



PC#24

Plugs & Anodized Aluminum top available in:



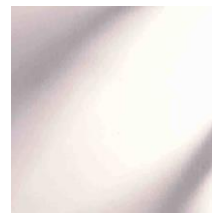
#4 Stainless



#4 Muntz



#8 Muntz



#8 Stainless

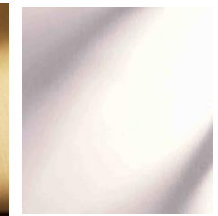
Back-plate available in:



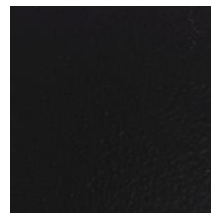
#4 Stainless (SS)



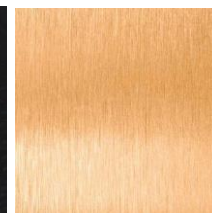
#4 Muntz (BRZ)



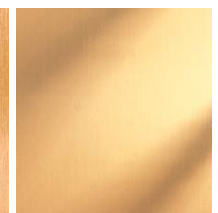
#8 Stainless (MS)



Powder Coat  
(PC)



Commercial Bronze  
(CB)



#8 Muntz  
(MB)

# #31

Available in:



#4 Stainless (SS)

#4 Muntz (BRZ)

#8 Stainless (MS)



Powder Coat

Commercial Bronze

#8 Muntz

(PC)

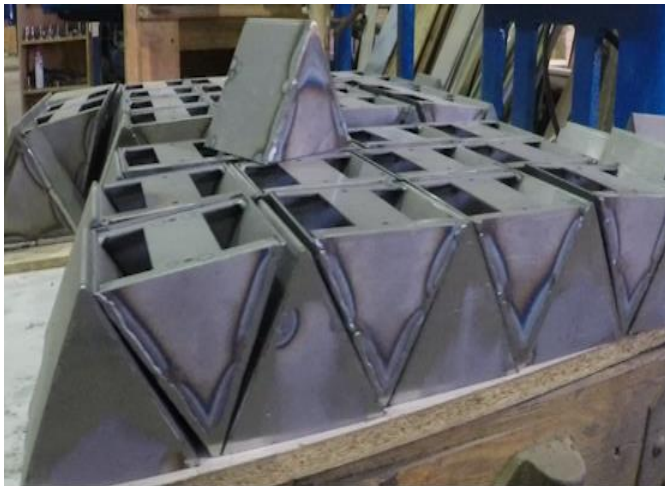
(CB)

(MB)

CB#31

\*\*\*\*\*Please contact us for pricing. Price varies with freight, material, quantities, and other custom applications \*\*\*\*\*

- 14 gauge solid back plate counter sunk top & bottom holes for #8 screws
- Applied vinyl lettering
- Removable welded steel triangle core with top layer applied metal claddings
- 5"(w) x 4-1/2" (h) x 4-1/2"(d) triangle

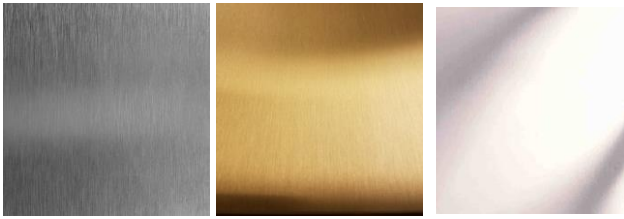


PC#31



# #32

Available in:



#4 Stainless (SS)

#4 Muntz (BRZ)

#8 Stainless (MS)



Powder Coat  
(PC)

Commercial Bronze  
(CB)

#8 Muntz  
(MB)

- 1/8" beveled solid back plate counter sunk top holes for #8 screws
- Double-side tape added to backside to ensure stability
- Applied vinyl character
- Removable inside core triangle core with top layer applied 14ga metal claddings
- 2-5/8"(w) x 4-1/2" (h) x 4-5/16"(d) triangle

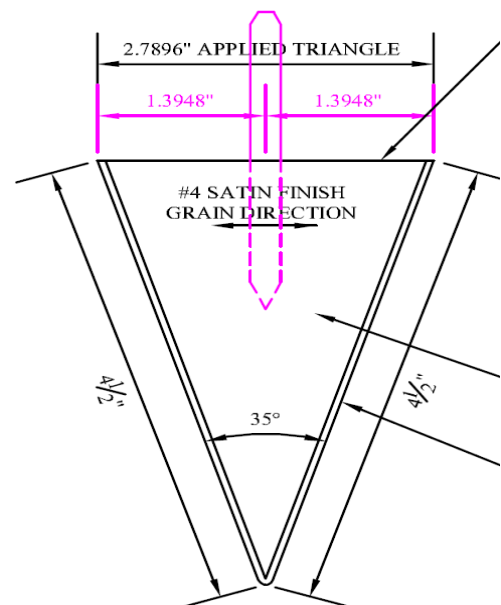


SS#32

\*\*\*\*\*Please contact us for pricing. Price varies with freight, material, quantities, and other custom applications \*\*\*\*\*



SS#32

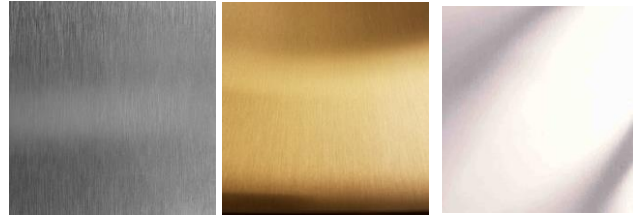


**FRONT VIEW**



# #33

Available in:



#4 Stainless (SS)

#4 Muntz (BRZ)

#8 Stainless (MS)



Powder Coat

Commercial Bronze

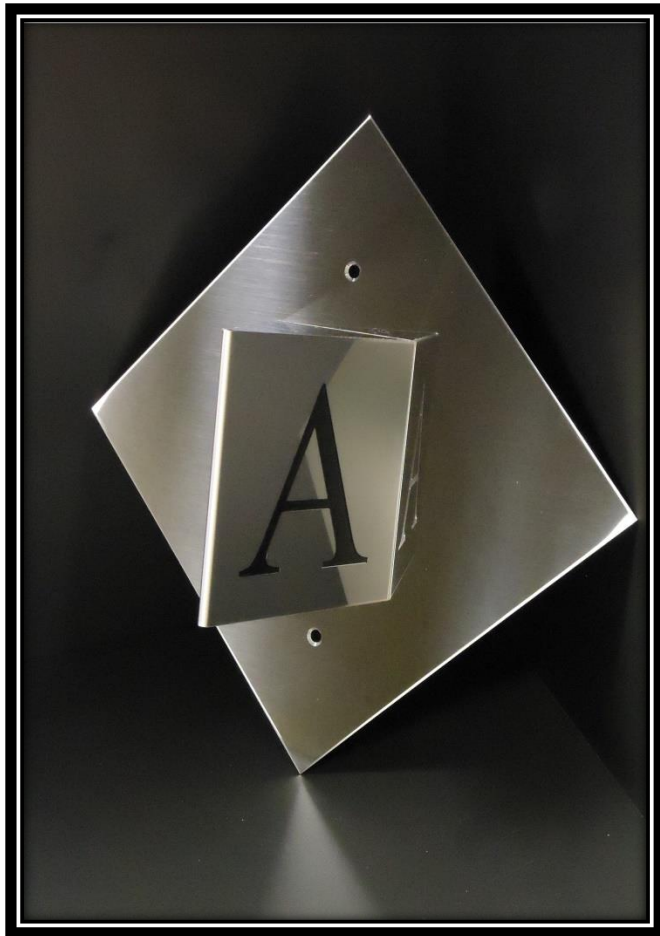
#8 Muntz

(PC)

(CB)

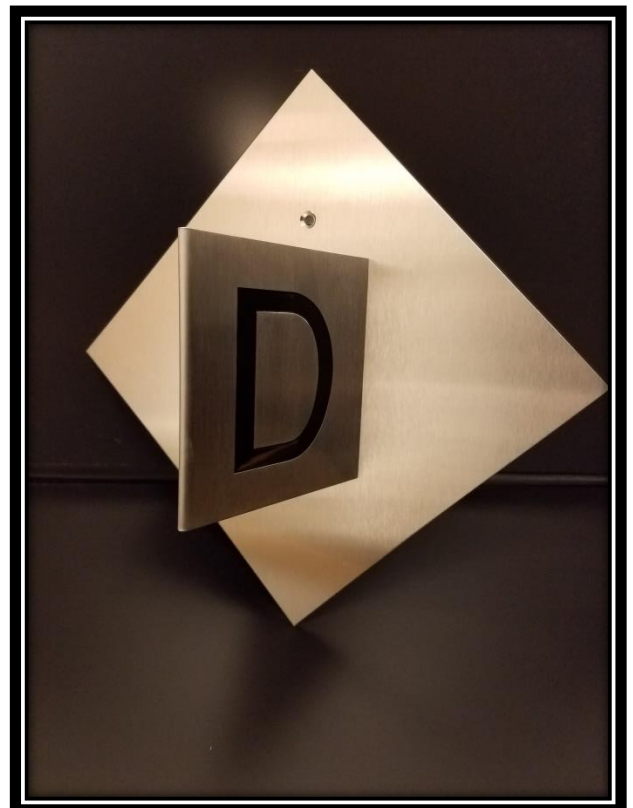
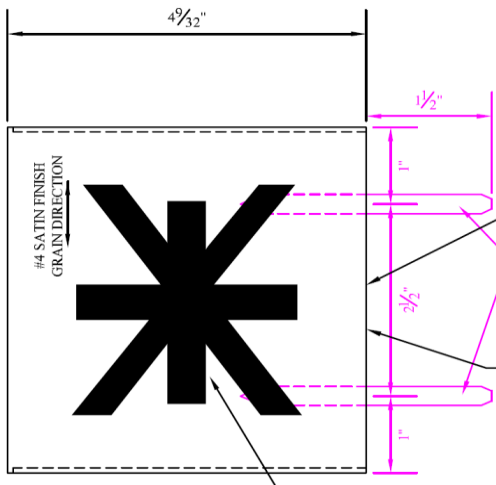
(MB)

\*\*\*\*\*Please contact us for pricing. Price varies with freight, material, quantities, and other custom applications \*\*\*\*\*



MS#33

- 14ga solid back plate counter sunk top and/or bottom holes for #8 screws
- Double-side tape added to backside to ensure stability
- Engraved & filled character
- Removable core triangle core with top layer applied 14ga metal claddings
- 2-5/8"(w) x 4-1/2" (h) x 4-5/16"(d) triangle



SS#33

# #34

Available in:



#4 Stainless (SS)

#4 Muntz (BRZ)

#8 Stainless (MS)

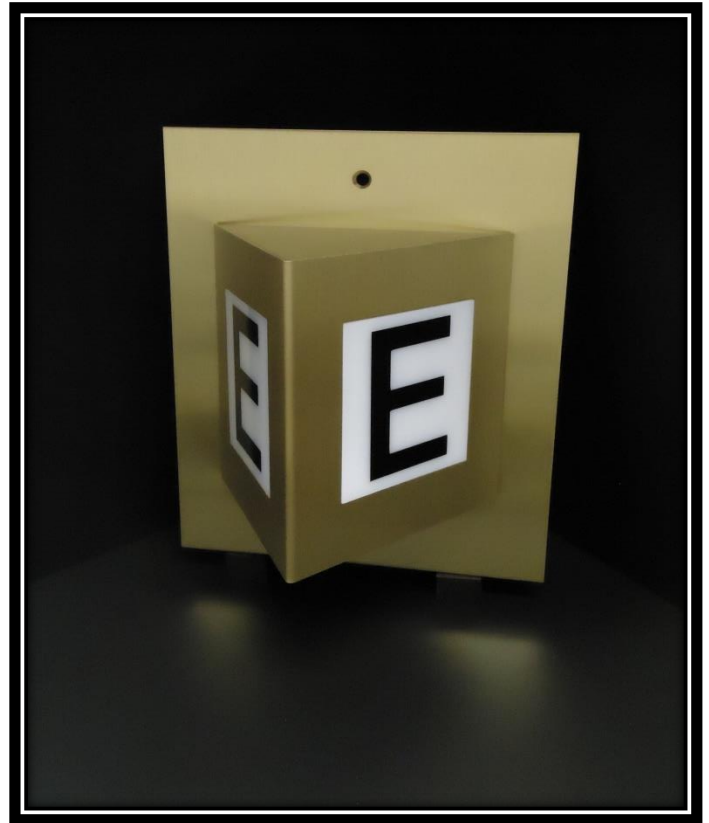


Powder Coat  
(PC)

Commercial Bronze  
(CB)

#8 Muntz  
(MB)

\*\*\*\*\*Please contact us for pricing. Price varies with freight, material, quantities, and other custom applications \*\*\*\*\*

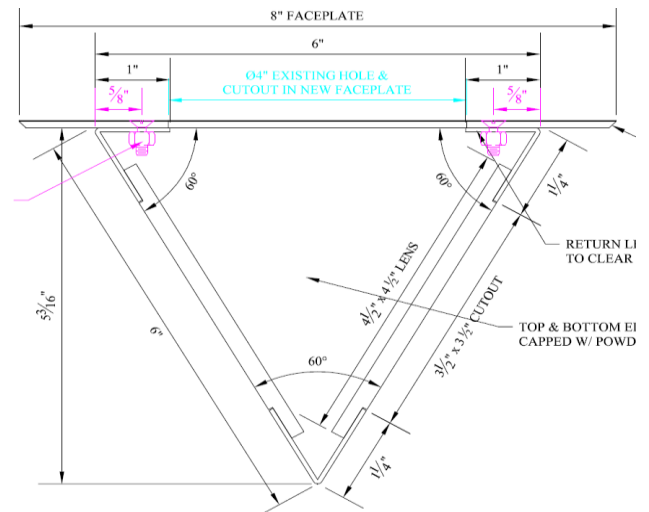


BRZ#34

- 1/8" solid back plate counter sunk top & bottom holes for #8 screws
- Double-side tape added to backside to ensure stability
- Applied black vinyl character
- White polycarbonate diffuser
- 24V LED accessible strip
- Removable triangle for access to lighting strip
- 5-3/16"(w) x 6" (h) x 5-7/8"(d) triangle



SS#34

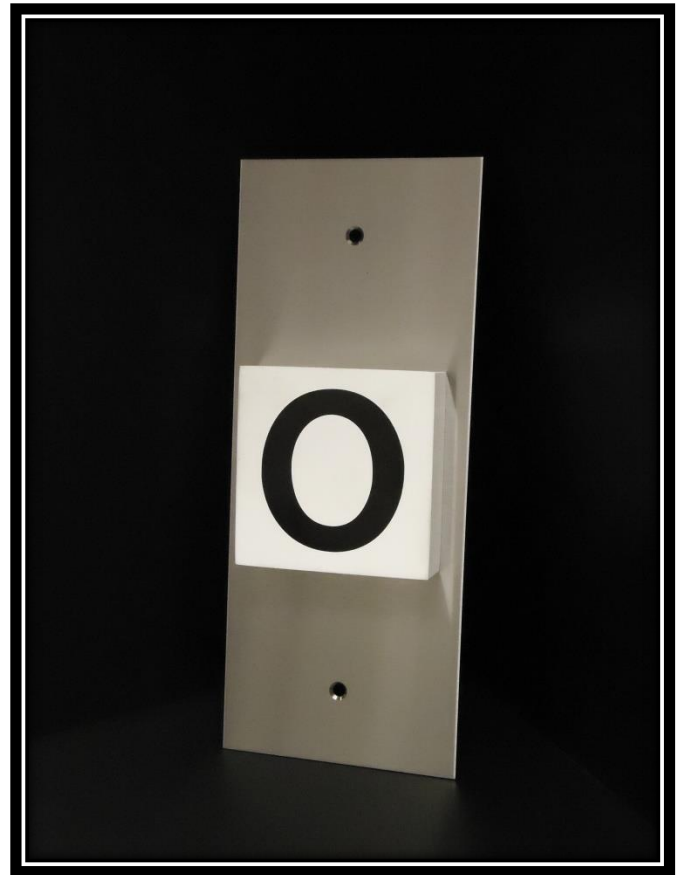


TOP VIEW

# #41

- 14ga solid vertical back plate counter sunk top and/or bottom holes for #8 screws
- Double-side tape added to backside to ensure stability
- 4" square, 1/2" thick, painted wood mounted base with applied black vinyl character
  - o Vinyl and painted wood available in multiple colors
- 5" (w) x 11" (h) back plate
- Flag removable with countersunk #10 sheet metal screws for maintenance

\*\*\*\*\*Please contact us for pricing. Price varies with freight, material, quantities, and other custom applications \*\*\*\*\*

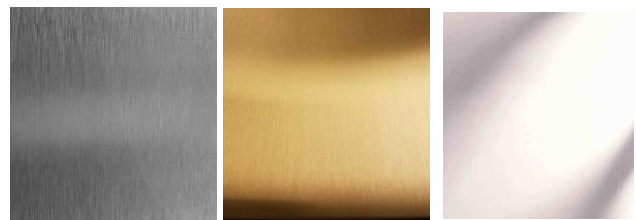


SS#41



SS#41

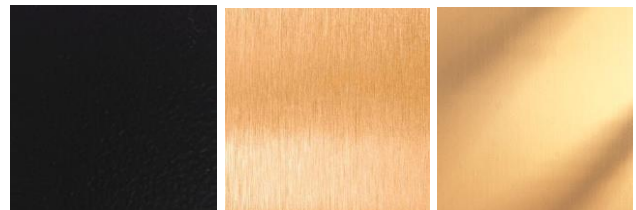
Back Plate available in:



#4 Stainless (SS)

#4 Muntz (BRZ)

#8 Stainless (MS)



Powder Coat

Commercial Bronze

#8 Muntz

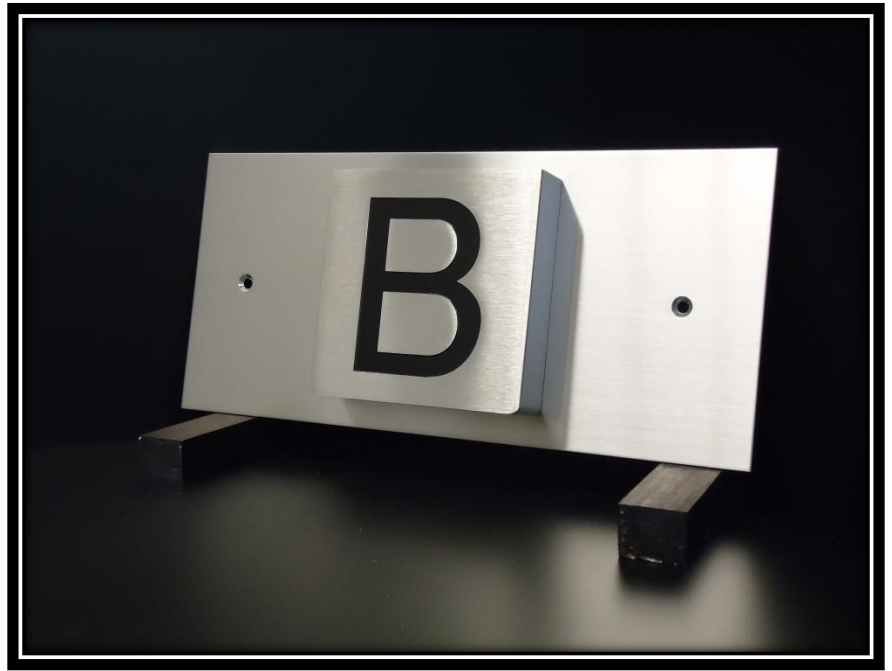
(PC)

(CB)

(MB)

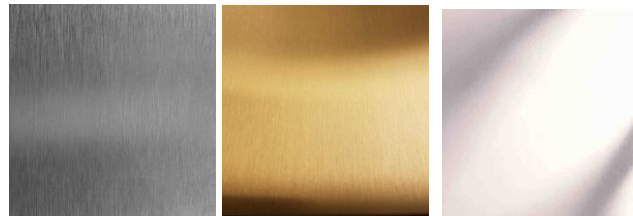
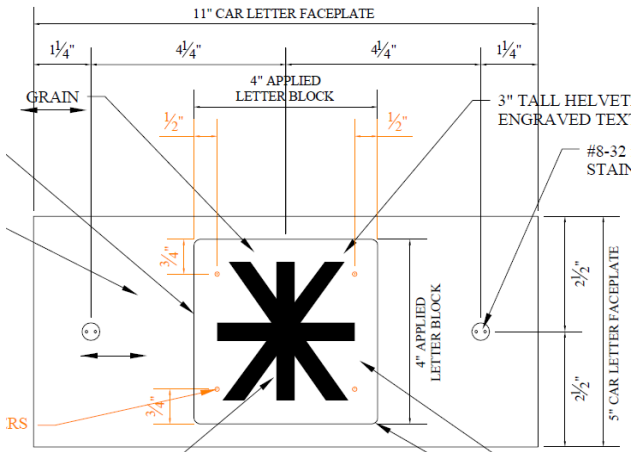
# #42

- 14ga solid horizontal back plate counter sunk left and right holes for #8 screws
- Double-side tape added to backside to ensure stability
- 4" square, 1/2" thick, painted wood mounted base with applied black vinyl character
- 5" (h) x 11"(w) back plate
- Flag removable with countersunk #10 sheet metal screws for maintenance



SS#42

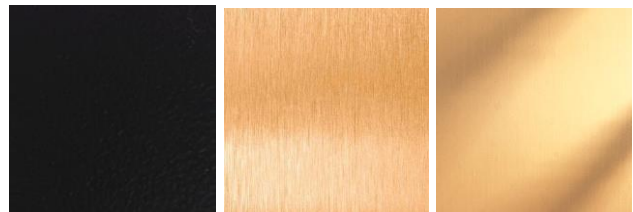
Available in:



#4 Stainless (SS)

#4 Muntz (BRZ)

#8 Stainless (MS)



Powder Coat

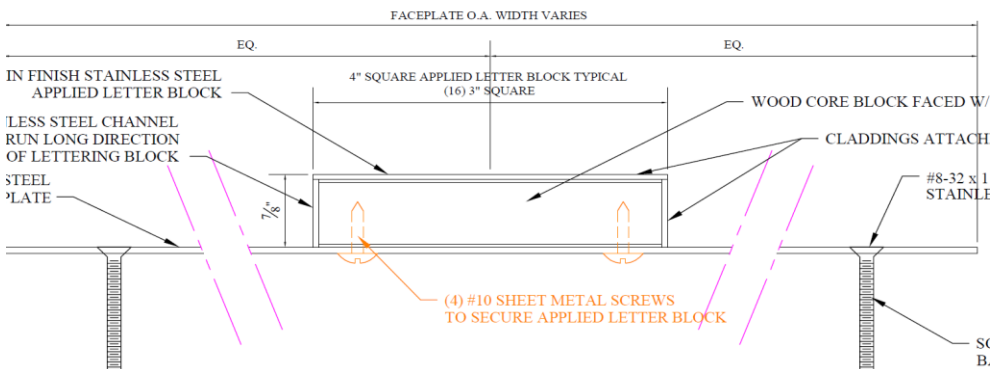
Commercial Bronze

#8 Muntz

(PC)

(CB)

(MB)



\*\*\*\*\*Please contact us for pricing. Price varies with freight, material, quantities, and other custom applications \*\*\*\*\*



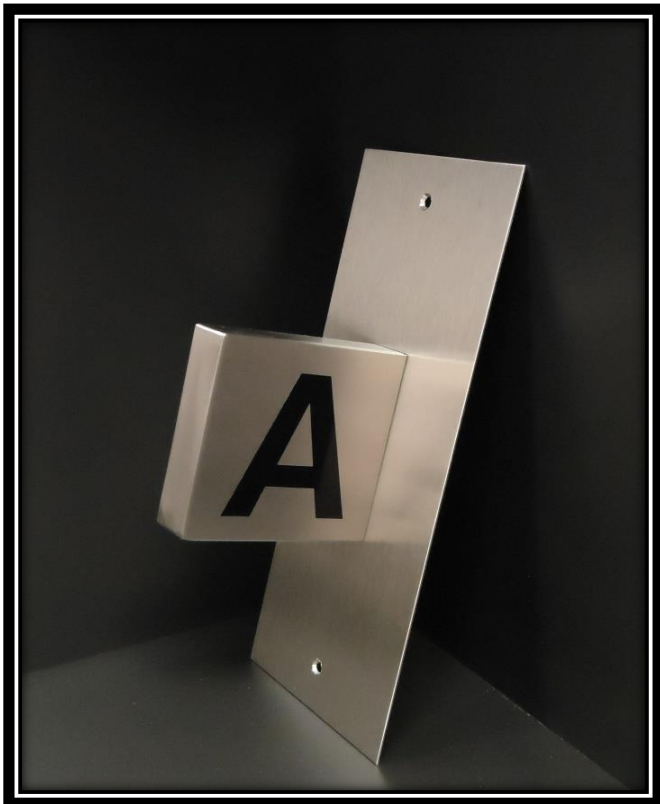
# #43

- 14ga solid vertical back plate counter sunk top and bottom holes for #8 screws
- Double-side tape added to backside to ensure stability
- 4" square, 1/2" thick, metal material mounted flag with two-sided applied black vinyl character
- 5" (w) x 11" (h) back plate
- Flag removable with countersunk #10 sheet metal screws for maintenance

\*\*\*\*\*Please contact us for pricing. Price varies with freight, material, quantities, and other custom applications \*\*\*\*\*



MB#43

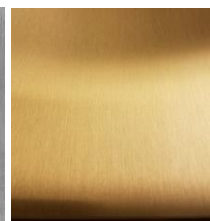


SS#43

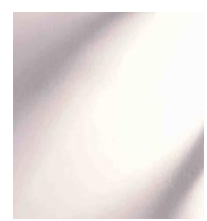
Available in:



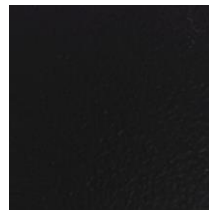
#4 Stainless (SS)



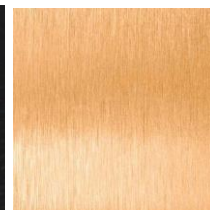
#4 Muntz (BRZ)



#8 Stainless (MS)



Powder Coat  
(PC)



Commercial Bronze  
(CB)



#8 Muntz  
(MB)



## Other Additional Features Include:

- Incorporating Fire Service Locks (pictured above)
- Incorporate LED's
- Incorporate Speakers
- Hiding all exposed fasteners



\*\*\*\*\*Please contact us for other lobby applications including call stations, hall lanterns, signage, and PORT material shrouding \*\*\*\*\*